

AVANT-TECH

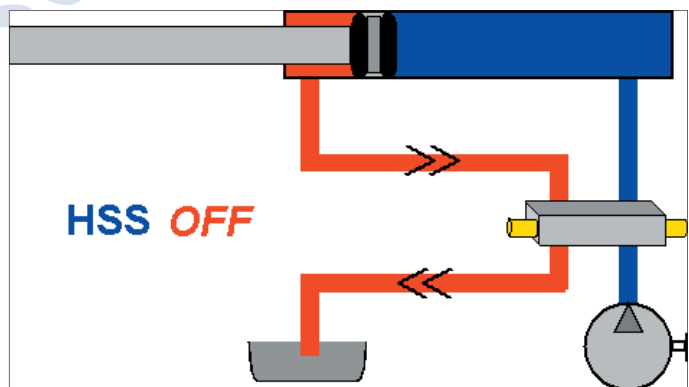
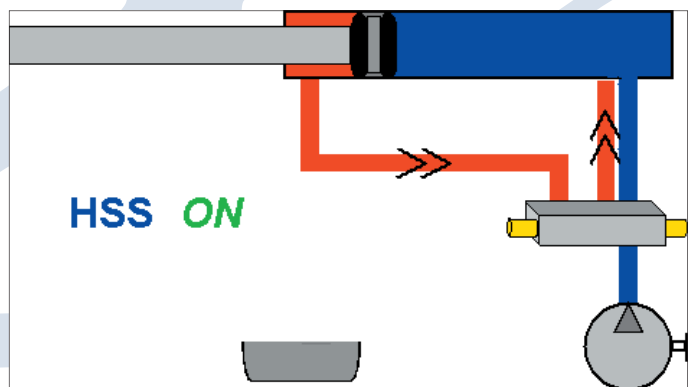
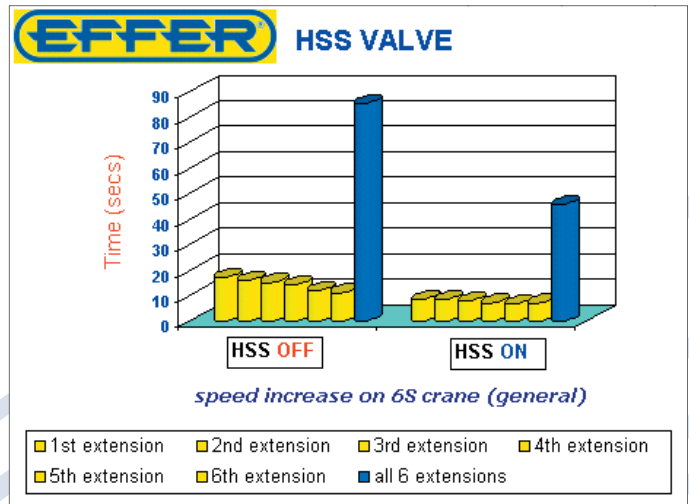
HSS (High Speed System)

The EFFER System HSS (High-Speed System) allows to recirculate the oil getting out of the extensions cylinders directly to the cylinders themselves (barrel side).

This means that the extensions outlet speed can improve by up to 80 % in comparison with a traditional system.

However, when the system is on, the thrust power of the extensions cylinders is slightly lower (due to the lesser pressure). For this reason, on some models of cranes, it is possible to disengage the HSS system bringing the extension speed back to the standard, but getting the full thrust of the extensions (ex. when working with booms in vertical position).

In such cases, the device is switched off from the radio-controls transmitter.



120	140	155	165	170	210	250	310	325	340	370	500	550	750	850
●	●	●	●	●	●	●	●	●	●	●	●	●	●	●
1550J-P	1750													
●	●													

● Standard ● Optional



EFFER Holding S.p.A.
Via C. Bonazzi, 12/14 - 40013 Castel Maggiore (BO) Italy
tel. +39 051 4181211 - fax +39 051 701492
www.effer.it - e-mail: truckcranes@effer.it

DE00010GB_1-040505